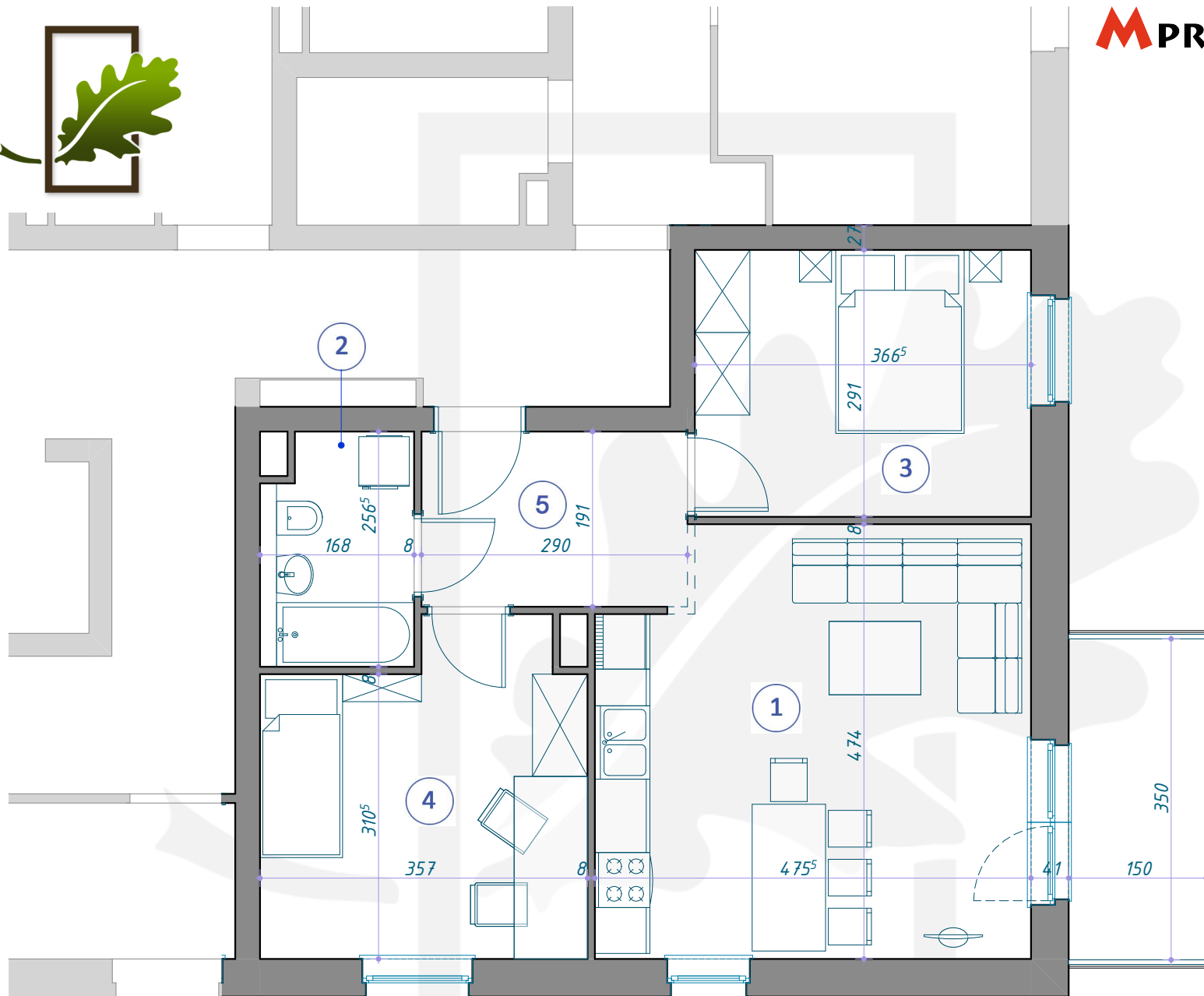
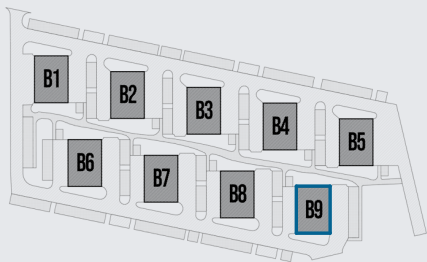
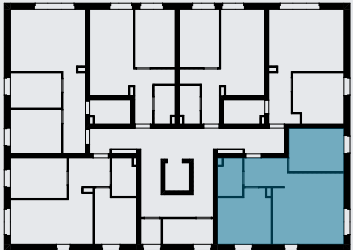


OSIEDLE DĘBOWE



MIESZKANIE B9/5/30

PIĘTRO +5 (KONDYGNACJA 6) / BLOK B9



- 1 SALON Z ANEKSEM KUCHENNYM 21,47m²
- 2 ŁAZIENKA 4,13m²
- 3 POKÓJ 10,67m²
- 4 POKÓJ 12,02m²
- 5 KORYTARZ 5,54m²

53,83m²