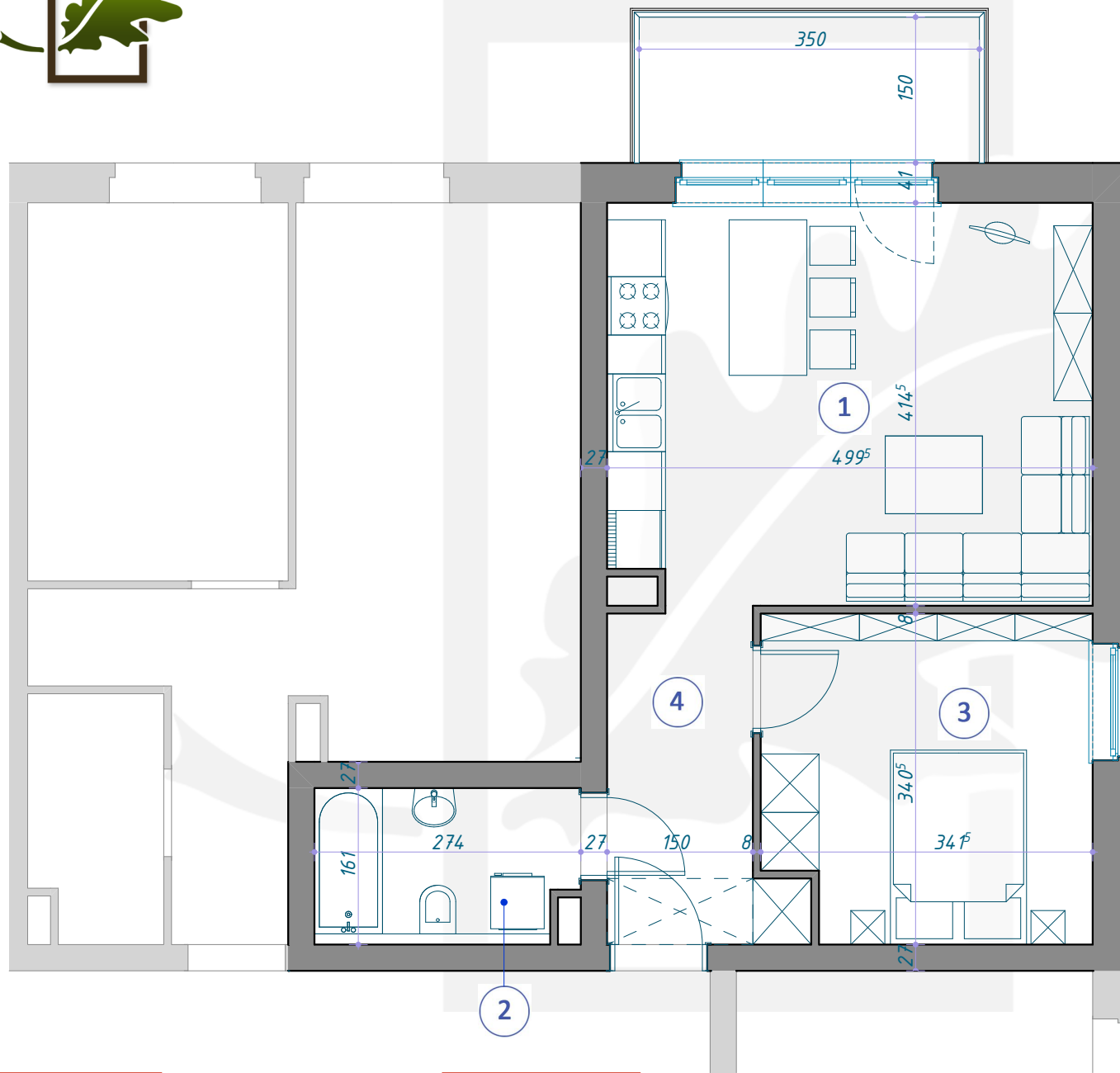
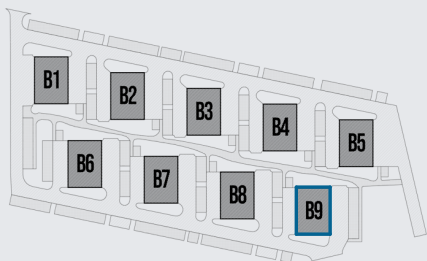
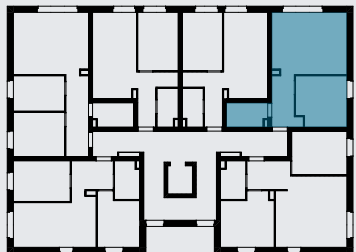


OSIEDLE DĘBOWE



MIESZKANIE B9/3/17 PIĘTRO +3 (KONDYGNACJA 4) / BLOK B9



1	SALON Z ANEKSEM KUCHENNYM	20,48m ²
2	ŁAZIENKA	4,23m ²
3	POKÓJ	11,17m ²
4	KORYTARZ	5,52m ²
<hr/>		
		41,40m ²