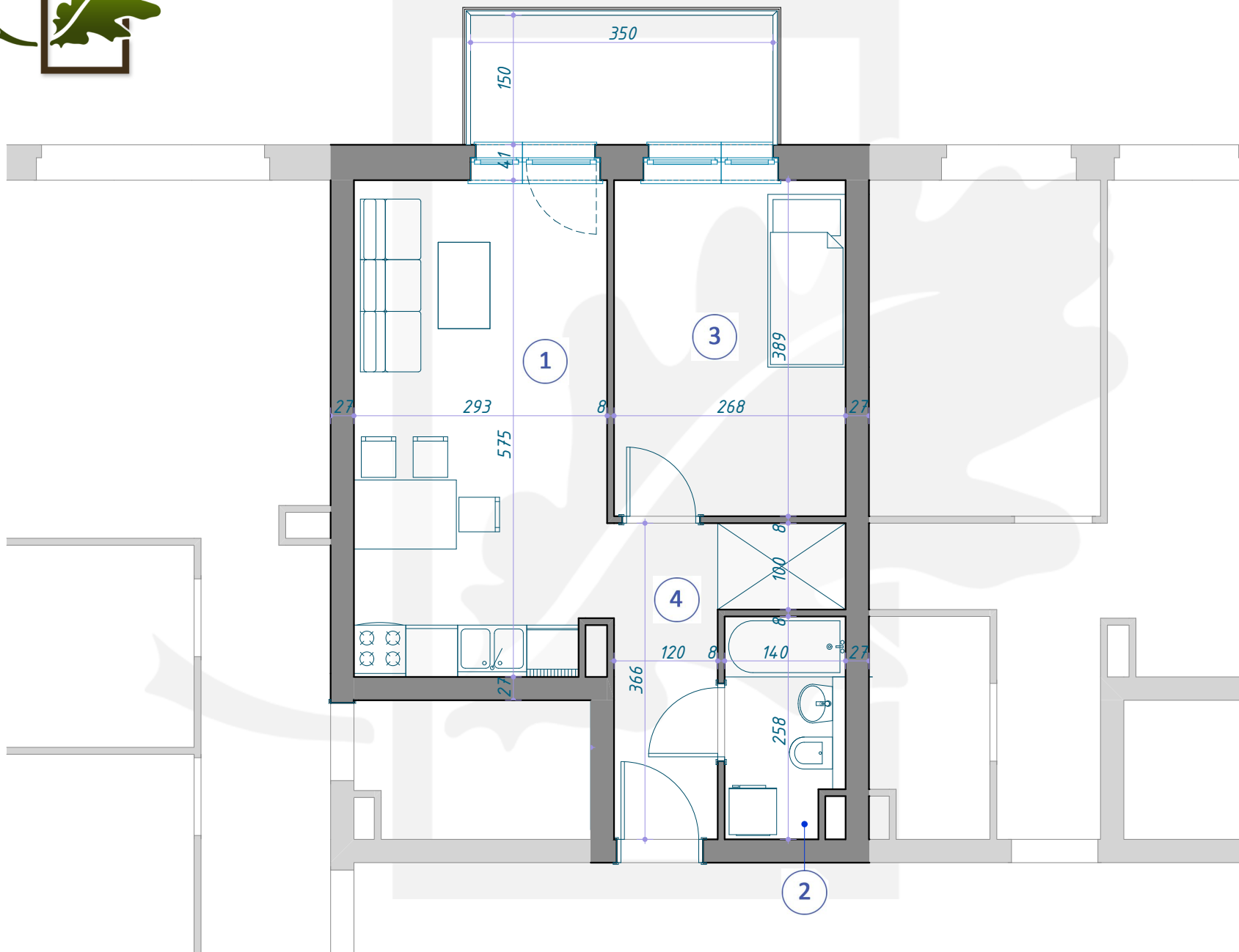
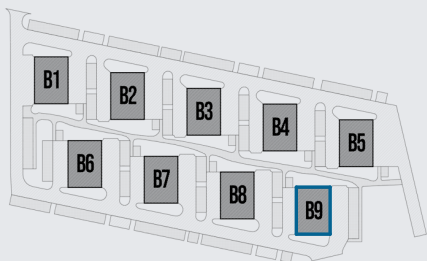
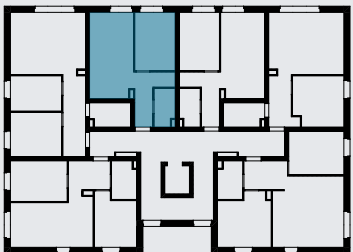


OSIEDLE DĘBOWE



MIESZKANIE B9/3/15

PIĘTRO +3 (KONDYGNACJA 4) / BLOK B9



1	SALON Z ANEKSEM KUCHENNYM	16,62m ²
2	ŁAZIENKA	3,43m ²
3	POKÓJ	10,43m ²
4	KORYTARZ	5,87m ²
<hr/>		
		36,35m²