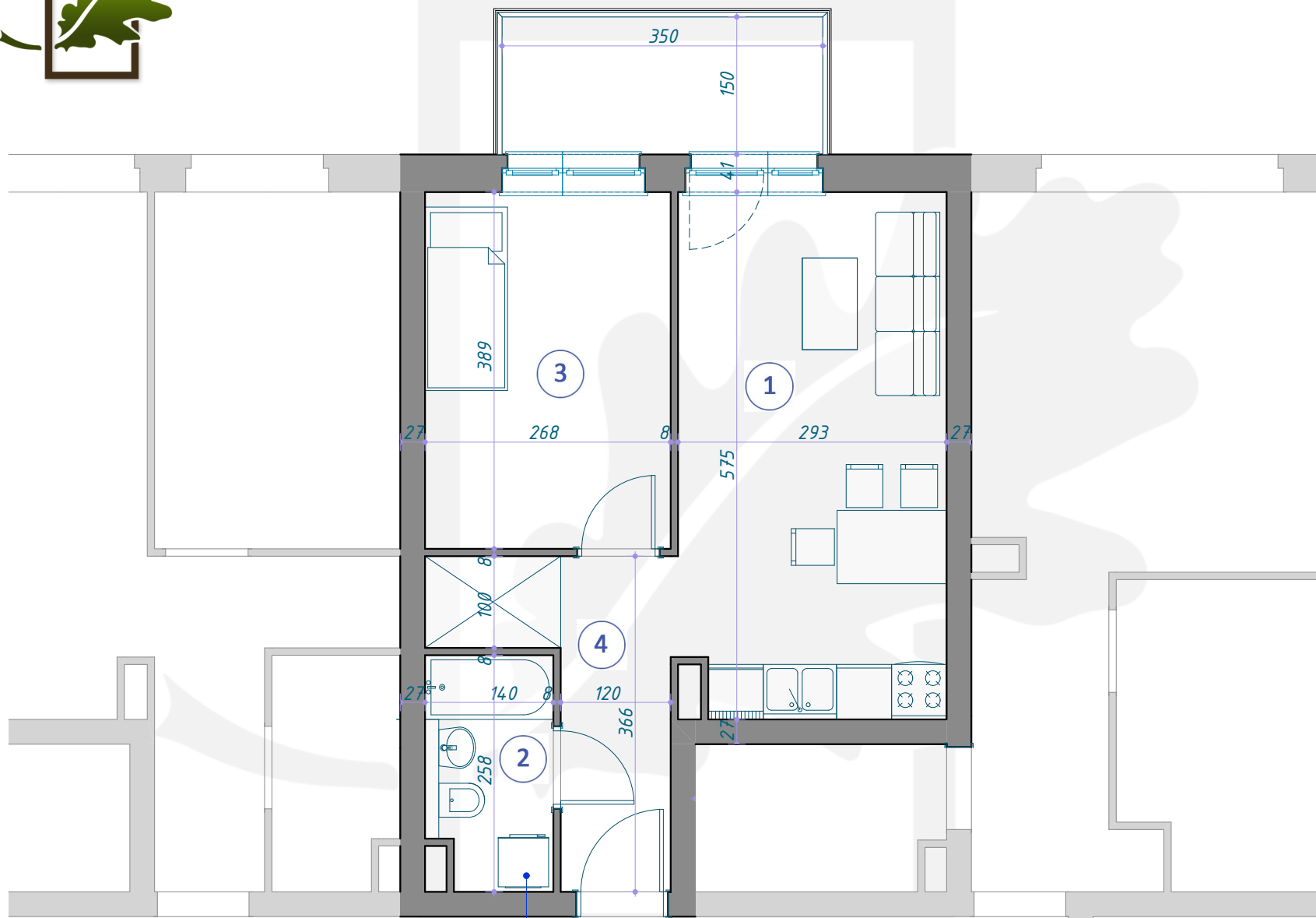
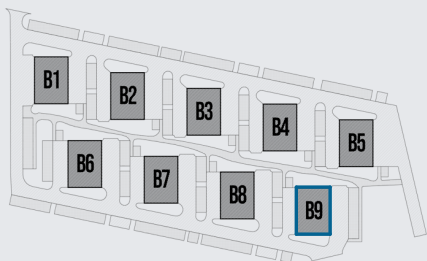


# OSIEDLE DĘBOWE



## MIESZKANIE B9/2/10

PIĘTRO +2 (KONDYGNACJA 3) / BLOK B9



1	SALON Z ANEKSEM KUCHENNYM	16,62m <sup>2</sup>
2	ŁAZIENKA	3,43m <sup>2</sup>
3	POKÓJ	10,43m <sup>2</sup>
4	KORYTARZ	5,87m <sup>2</sup>
<hr/>		
		36,35m <sup>2</sup>