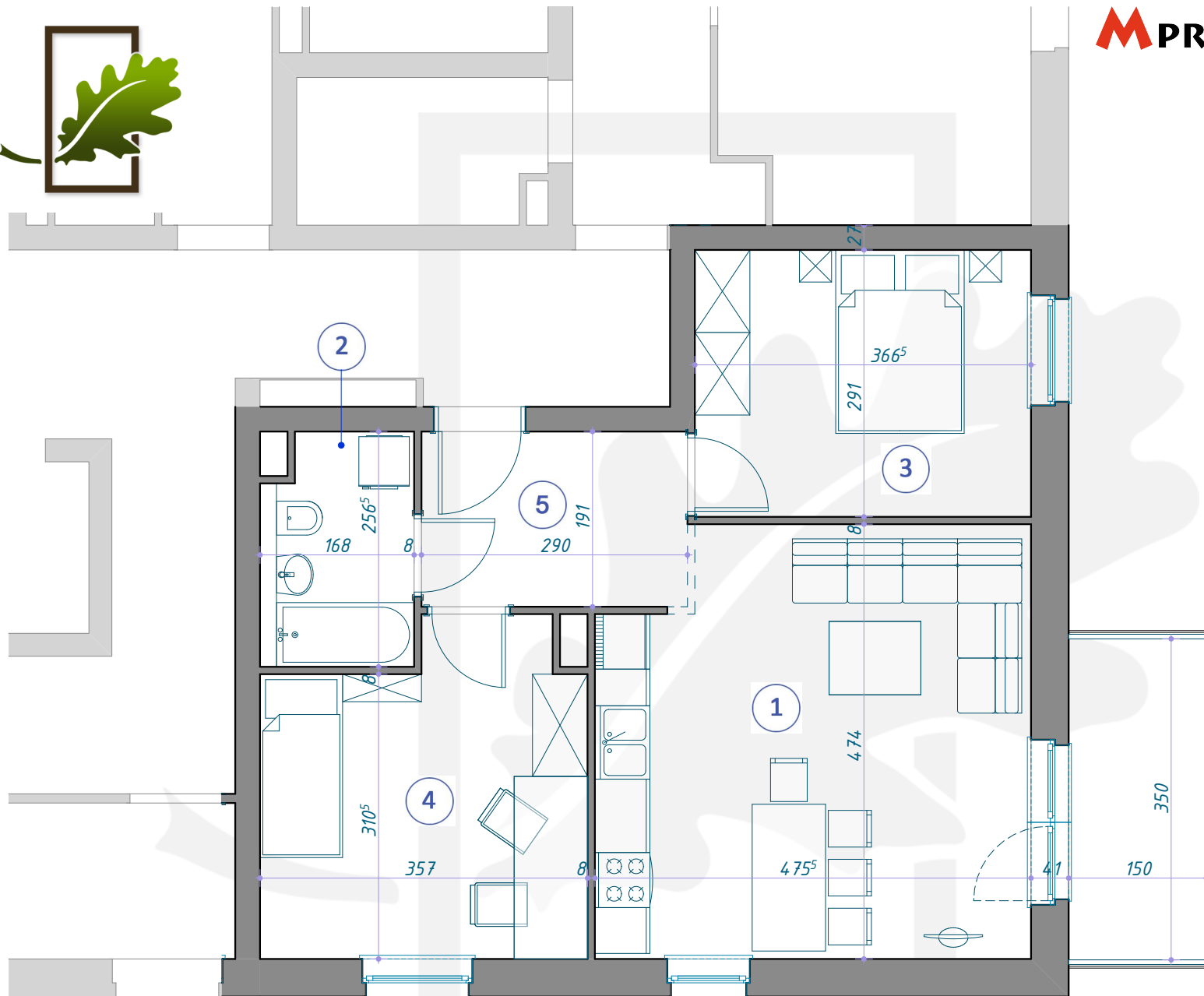
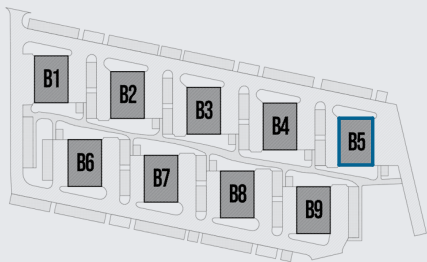
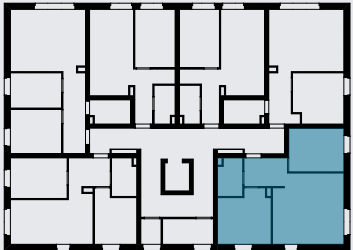


# OSIEDLE DĘBOWE



## MIESZKANIE B5/5/30

PIĘTRO +5 (KONDYGNACJA 6) / BLOK B5



- 1 SALON Z ANEKSEM KUCHENNYM 21,47m<sup>2</sup>
- 2 ŁAZIENKA 4,13m<sup>2</sup>
- 3 POKÓJ 10,67m<sup>2</sup>
- 4 POKÓJ 12,02m<sup>2</sup>
- 5 KORYTARZ 5,54m<sup>2</sup>

**53,83m<sup>2</sup>**