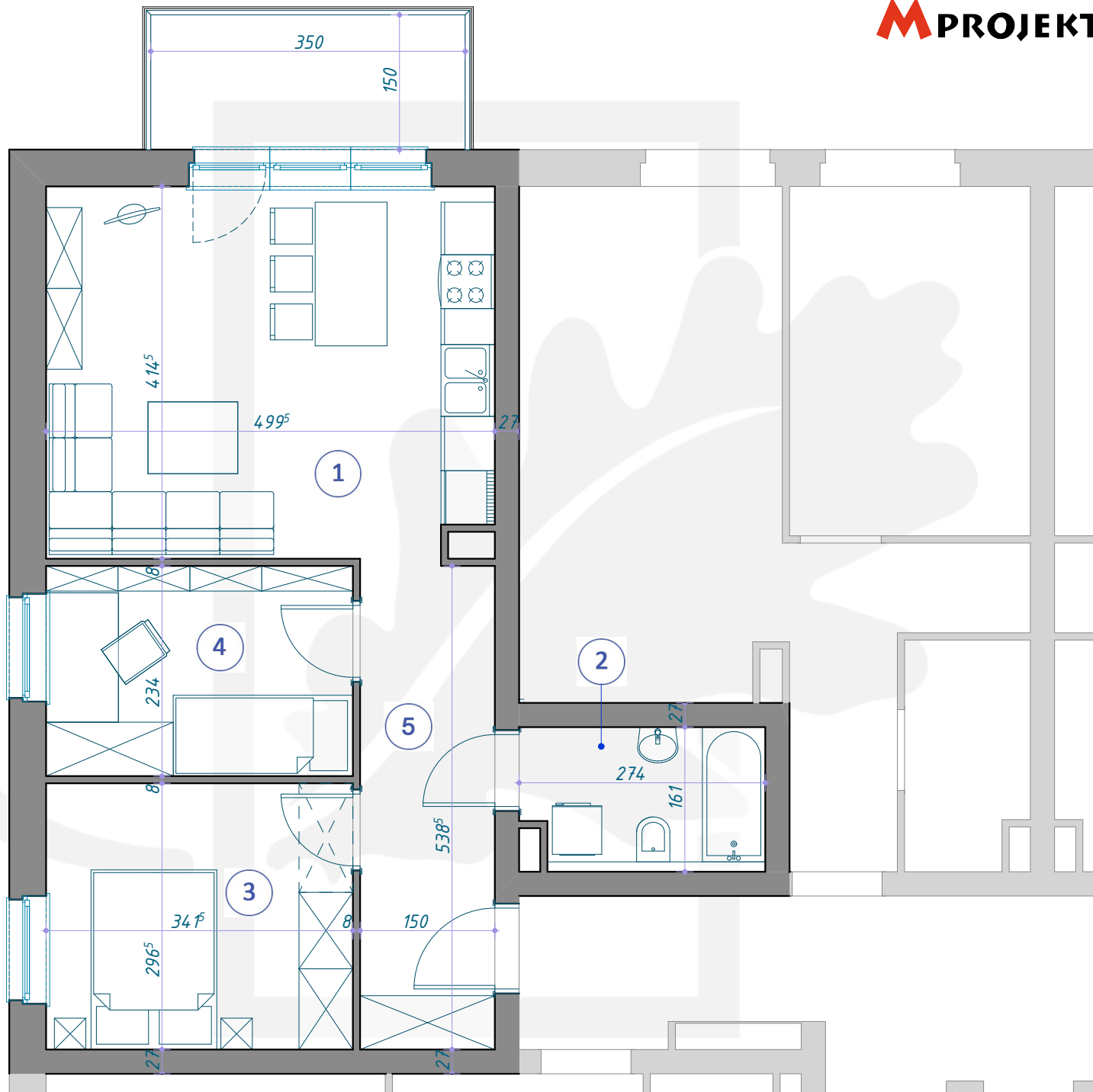
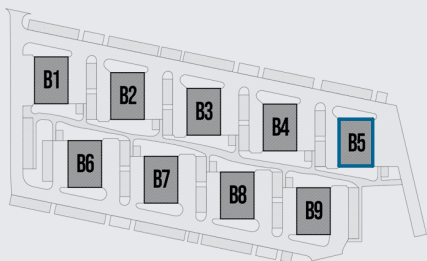
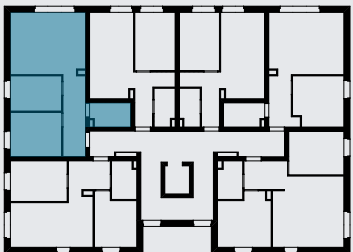


# OSIEDLE DĘBOWE



## MIESZKANIE B5/4/20

PIĘTRO +4 (KONDYGNACJA 5) / BLOK B5



- 1 SALON Z ANEKSEM KUCHENNYM 20,48m<sup>2</sup>
- 2 ŁAZIENKA 4,23m<sup>2</sup>
- 3 POKÓJ 10,13m<sup>2</sup>
- 4 POKÓJ 7,99m<sup>2</sup>
- 5 KORYTARZ 8,08m<sup>2</sup>

50,91m<sup>2</sup>