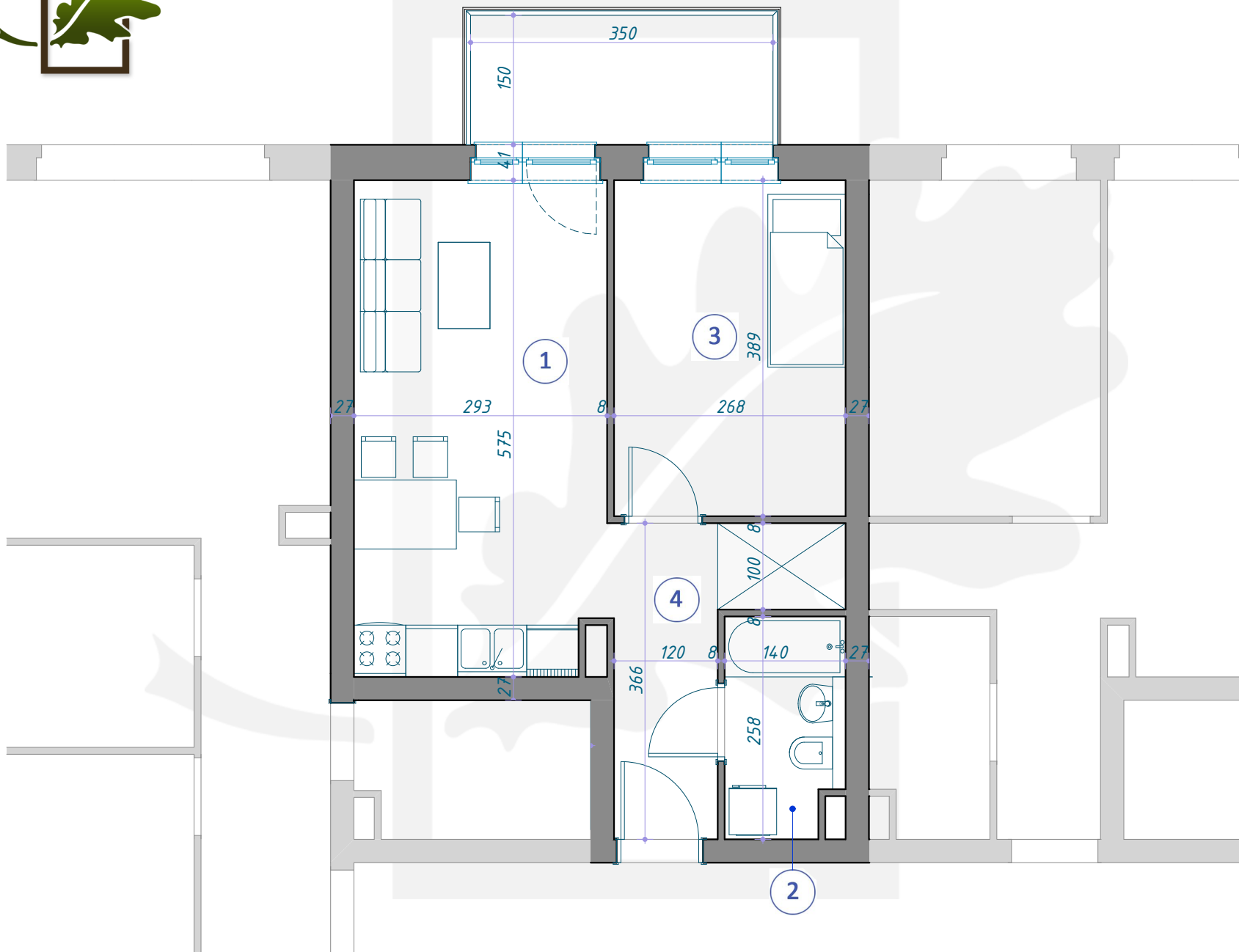
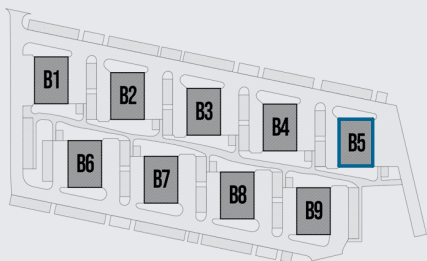
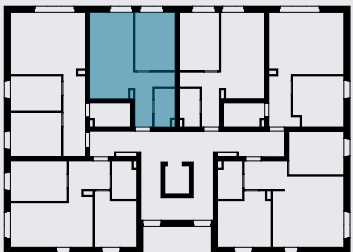


OSIEDLE DĘBOWE



MIESZKANIE B5/2/9

PIĘTRO +2 (KONDYGNACJA 3) / BLOK B5



1	SALON Z ANEKSEM KUCHENNYM	16,62m ²
2	ŁAZIENKA	3,43m ²
3	POKÓJ	10,43m ²
4	KORYTARZ	5,87m ²
		<hr/>
		36,35m ²