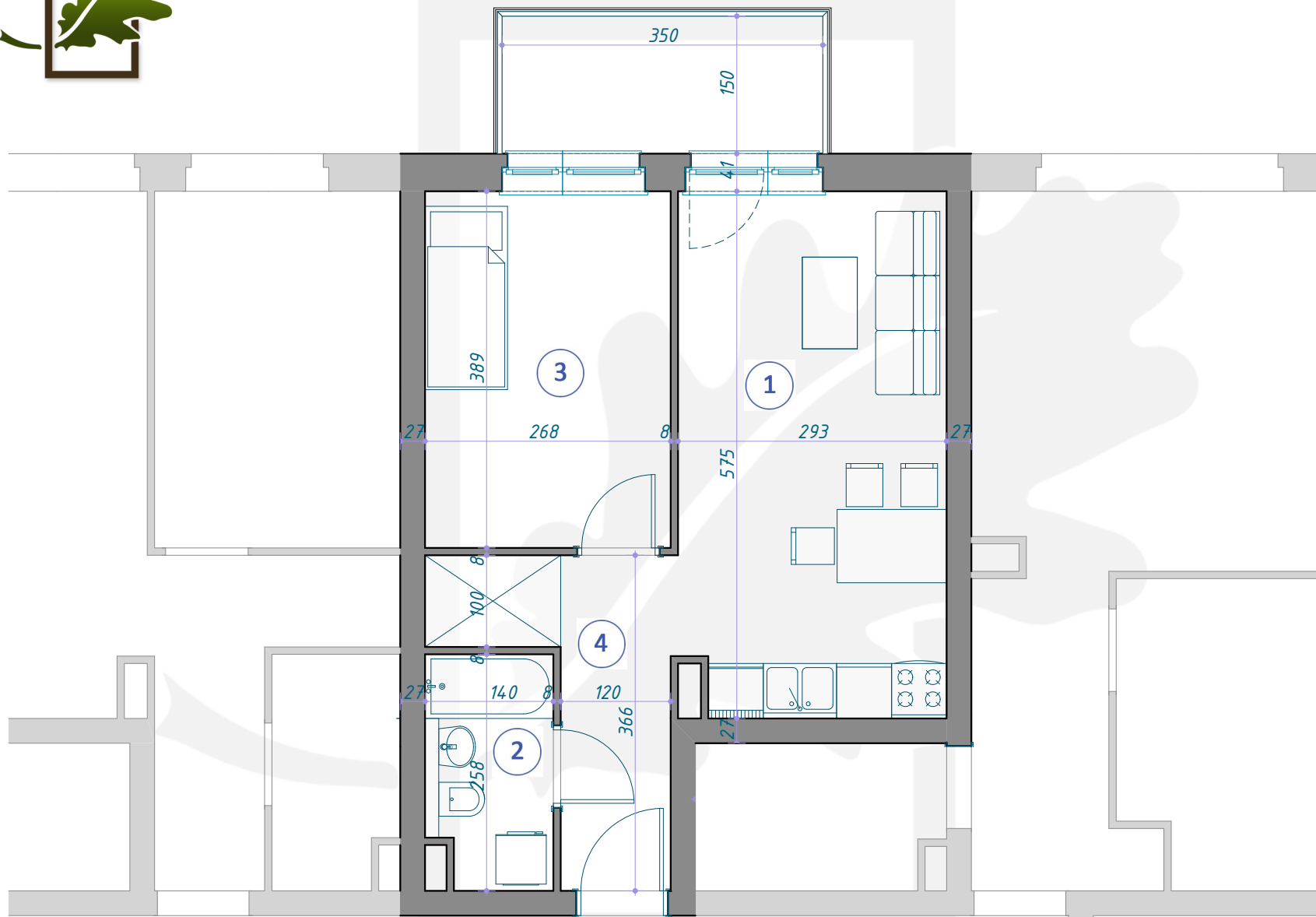
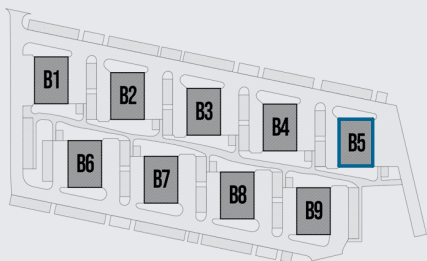


# OSIEDLE DĘBOWE



## MIESZKANIE B5/1/4

PIĘTRO +1 (KONDYGNACJA 2) / BLOK B5



1	SALON Z ANEKSEM KUCHENNYM	16,62m <sup>2</sup>
2	ŁAZIENKA	3,43m <sup>2</sup>
3	POKÓJ	10,43m <sup>2</sup>
4	KORYTARZ	5,87m <sup>2</sup>
		<hr/>
		36,35m <sup>2</sup>