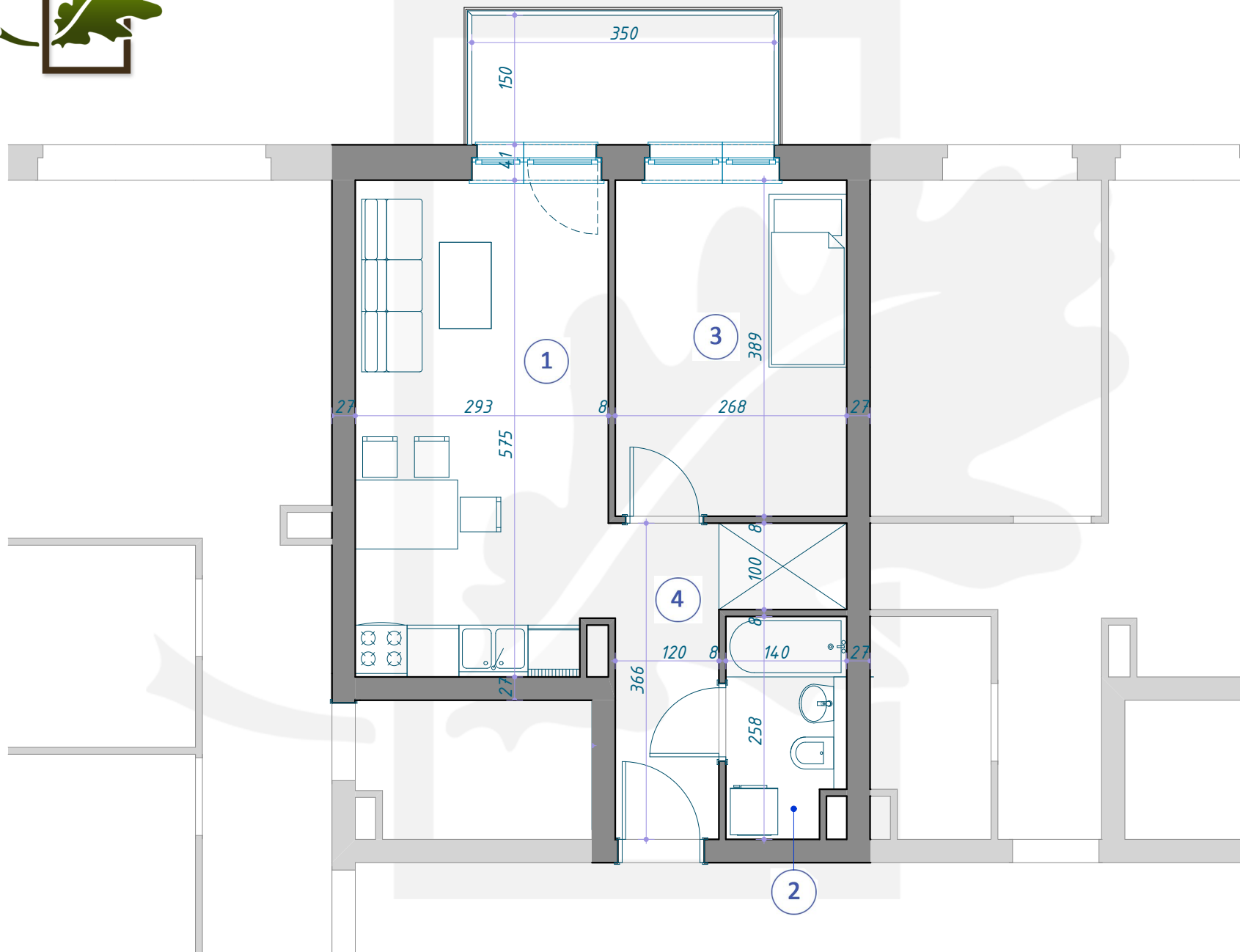
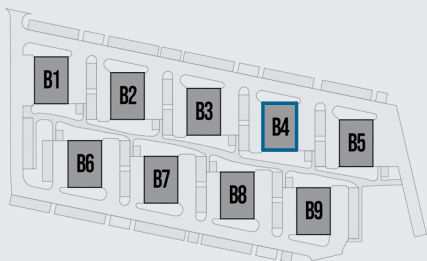
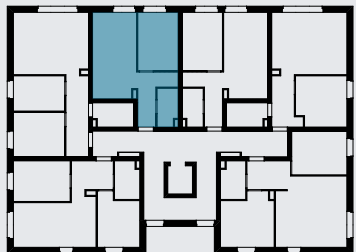


OSIEDLE DĘBOWE



MIESZKANIE B4/2/9

PIĘTRO +2 (KONDYGNACJA 3) / BLOK B4



| | | |
|-------|---------------------------|---------------------|
| 1 | SALON Z ANEKSEM KUCHENNYM | 16,62m ² |
| 2 | ŁAZIENKA | 3,43m ² |
| 3 | POKÓJ | 10,43m ² |
| 4 | KORYTARZ | 5,87m ² |
| <hr/> | | 36,35m ² |